







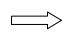





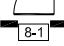
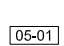
# CASA VITROTTI - viale della Stazione, n. 3

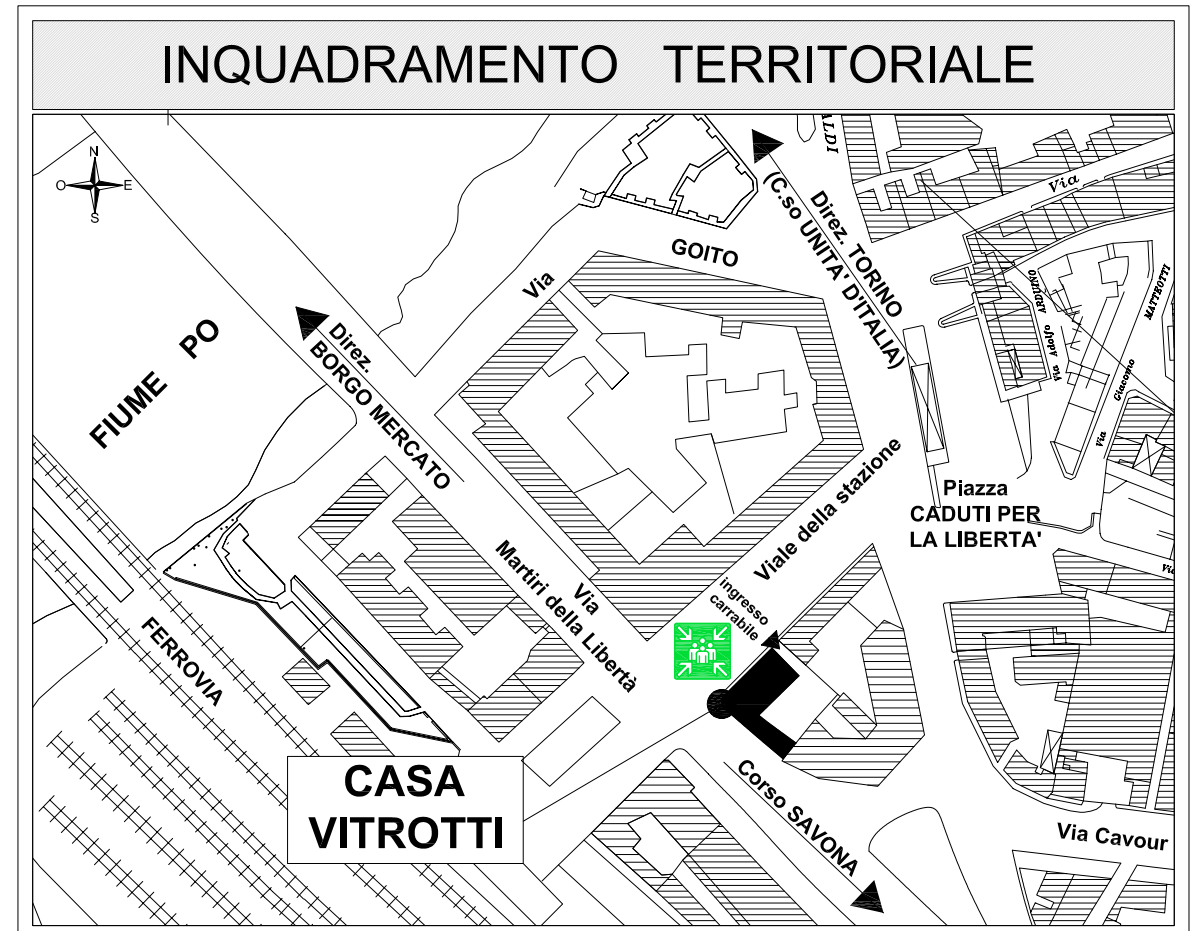
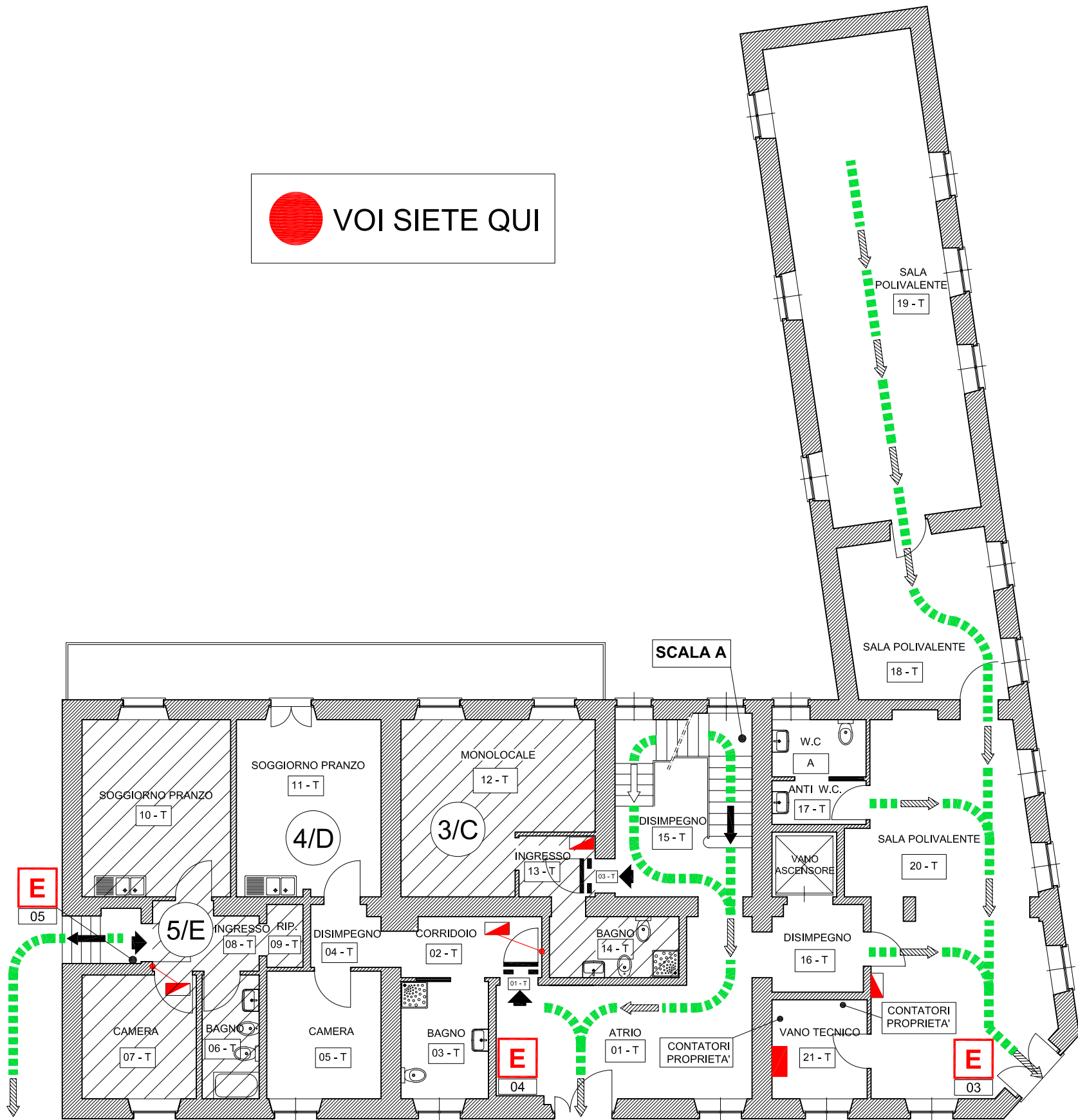
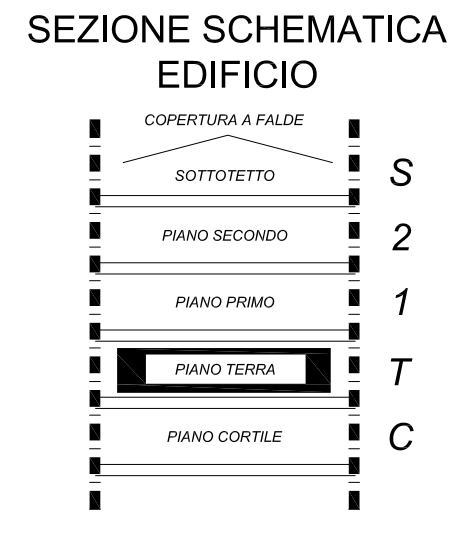
## PIANO DI EMERGENZA

(D.Lgs. 19/09/1994, n. 626 s.m.i. - D.M. 10/03/1998 s.m.i.)

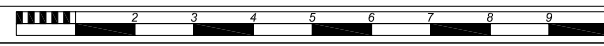
 VOI SIETE QUI

### LEGENDA (Generale di tutto l'edificio)

Cartellonistica di salvataggio ed antincendio	
	Percorso verso uscita di emergenza
	Uscita di emergenza
	Punto di raccolta
	Estintore
	Percorso di uscita orizzontale
	Percorso di uscita verso il basso
	Percorso di uscita verso l'alto
	Estintore portatile
	Valvola intercettazione idrica potabile
	Quadro elettrico generale
	Quadro elettrico di zona
	Porta resistente al fuoco (es. 8-1 numero porta piano primo)
	Codice attribuito al locale (es: 05-01 numero locale-piano primo)
	U.E. Uscita di emergenza



Edificio: Centro per anziani autosufficienti Casa Vitrotti  
Oggetto: planimetria piano terra

Scala grafica:   
Foglio: 2/5    Città di Moncalieri (TO) - Servizio di prevenzione e protezione - Arch. Canio MAZZARO

Data: maggio 2006

Aggiornamento: gennaio 2008

L'asportazione o il danneggiamento del presente cartello è punito con l'arresto fino ad un mese o con ammenda da Euro 206,58 a Euro 619,75 come previsto dall'art.93 del D.Lgs. n°626/94 e s.m.i.